

# R.I.W.C.

ROSWELL INVASION WRESTLING CLUB

## - CRASH AND CLASH -

### NM STATE TOURNAMENT QUALIFIER

## SUNDAY - DECEMBER 19ND, 2021

**ROSWELL HIGH SCHOOL - 500 W. HOBBS ST, ROSWELL NM, 88201**

---

SESSION ONE - 6U, 10U, 15U BOYS / 8U, 12U GIRLS (9am—12:30pm)

SESSION TWO - 8U & 12U BOYS / 6U, 10U, 15U GIRLS (1pm—Completion)

---

WEIGH INS - Saturday, December 18th, 2021 from 6pm to 8pm at Roswell High School wrestling room. Look for the big gym and there will be signs in the building to direct you. Sunday Weigh-Ins from 7:30 to 8am. All weights will be scratch weight. Wrestlers will be required to weigh in with their uniform. (Singlet or 2 piece). If a wrestler does not make the registered weight, wrestler can pay an \$20.00 rebracketing fee on Saturday only.

---

DIVISIONS & WEIGHTS (Age On 9/1/2021)

6 & Under: 32, 35, 39, 43, 47, 51, 55, 59, 63, 67, 71, 75, 80, HWT (95 Max)

8 & Under: 37, 42, 46, 49, 53, 57, 61, 65, 69, 73, 77, 81, 87, 93, HWT (120 Max)

10 & Under: 50, 55, 60, 65, 70, 75, 80, 85, 90, 95, 100, 110, 120, 130, HWT (155 Max)

12 & Under: 60, 65, 70, 75, 80, 85, 90, 95, 100, 105, 110, 115, 120, 130, 140, 150, 165, 175, HWT (205 Max)

15 & Under: 75, 80, 88, 96, 106, 113, 120, 126, 132, 138, 145, 152, 160, 170, 182, 195, 220, HWT (285 Max)

Girls Division will follow the Age Divisions and will use a Madison Weight System.

---

ENTRY FEE - \$20.00 entry fee per wrestler. Check or Money Order. NO CASH. Double bracketing is allowed but must be in 2 divisions. Wrestlers cannot double bracket in the same division in 2 different weight classes with the exception of 15U. Check or Money Order made out to *Roswell Invasion*

---

RULES - 6U & 8U / 1-1-1      10U, 12U, & 15U / 1:30-1:30-1:30 All Consolation Rounds are 1-1-1

This tournament will follow the NFHS wrestling rules

REGISTRATION - All entries must be registered through trackwrestling.com. Entry deadline is Friday December 15th at 11:00pm

AWARDS - Individual Medals for 1st thru 4th. Team Awards for 1st thru 3rd

ADMISSION - There is a \$2.00 entry fee for all spectators. Presale admission at weigh-ins

CONTACT INFO - Chris Spear 575.635.6338      Johnathan Buckmister 505.850.5565



# R.I.W.C.

ROSWELL INVASION WRESTLING CLUB

## - CRASH AND CLASH -

### TOURNAMENT INFORMATION

Participating Host Hotels - Mention "Roswell Invasion Wrestling"

La Quinta Inn - 200 E. 19th St (10min, 3.7mi) - \$96 per / \$129 for Suite. Must book by Nov. 29th

Comfort Suites - 3610 N. Main (13min, 5.3mi) - \$89 per night

Holiday Inn Express - 3 Military Heights Dr. (11min, 3.8mi) - \$109 per night

Baymont Inn & Suites - 2300 N. Main St. (10min, 3.7mi) - \$80 per night

Comfort Suites - 3610 N. Main St. (14min, 6.5mi) - \$89 per night.

Clarion Inn & Suites - 2000 N. Main St. (10min 3.6mi) - \$79 per night (Book by Dec. 9th)

Days Inn - 1310 N. Main St. (9min, 2.9mi) - \$72.99 per night. 4 to a room King Room \$76.96 (\*Tax Included in both prices\*)

Presale for spectator admission will be sold at weigh-ins.

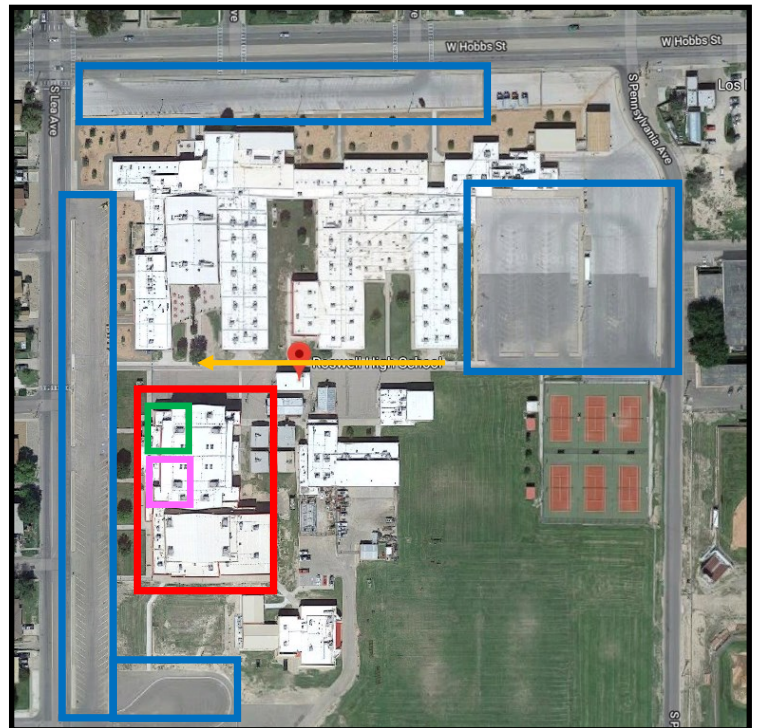
Hospitality Room available for Coaches, Referees & VIPs.

Concession will contain hot foods as well as snacks.

PARKING

WEIGH-INS  
&  
TOURNAMENT

WALKING  
PATH



Spectator  
&  
Weigh-In Entrance

Wrestler Entrance  
(Tournament Day)

