

# LA CUEVA WRESTLING



**War Hammer 6**

## Doug Zembiec

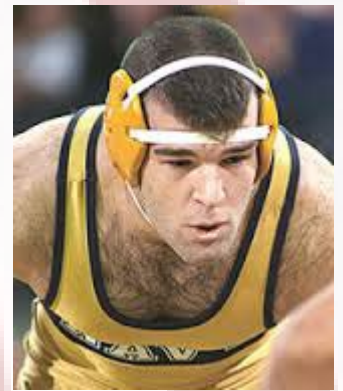


## Memorial



## Tournament

Sunday, November 19<sup>th</sup>, 2023



**\$2 Admission**

**Kids 5 and Under**

**Free**

**Concession Stand**

**Available**

### WEIGH-IN/SKIN CHECKS

Satellite weigh-ins will be utilized. Wrestlers will weigh in at practice Thursday/Friday before. Coaches are responsible for skin checks.

### REGISTRATION

\$20/wrestler per division. Wrestlers can double bracket in two different divisions. Wrestlers can NOT double bracket in the same age group.

### WEIGHT CLASSES

6U: 32,35,39,43,47,51,55,59,63,67,71,75,80,HWT

8U: 42,46,49,53,57,61,65,69,73,77,81,87,93,HWT

10U:55,60,65,70,75,80,85,90,95,100,110,120,130,HWT

12U:60,65,70,75,80,85,90,95,100,105,110,115,120,130,140,150,165,175,HWT

14U: 80,88,98,107,114,121,127,133,139,145,152,160,172,189,215,HWT

HS: 98,103,107,114,121,127,133,139,145,152,160,172,189,215,HWT

Girls Division

6U: 40,45,50,55,60,65,70,75,HWT

8U: 45,50,55,60,65,70,75,80,85,HWT

10U: 55,60,65,70,75,80,90,100,110,120,HWT

12U: 65,70,75,80,85,90,95,100,110,120,130,145,HWT

14U: 90,100,107,114,120,126,132,138,145,152,165,185,235,HWT

HS: 90,95,100,107,114,120,126,132,138,145,152,165,185,235,HWT

### **Wrestling Times:**

- **AM Session - Boys/Girls 6U/10U/14U – 8am – 12:30pm**
- **PM Session - Boys/Girls 8U/12U/HS – immediately following conclusion of AM session.**



La Cueva High School Main Gym  
7801 Wilshire Ave NE, Albuquerque, NM 87122  
Questions email Coach Posa at [jvrposa@gmail.com](mailto:jvrposa@gmail.com)

**REGISTER on**  
**TRACKWRESTLING.COM**

**Deadline Nov. 17**

### **AWARDS:**

**Individual medals to  
1<sup>st</sup>, 2<sup>nd</sup>, 3<sup>rd</sup> place finishes**

